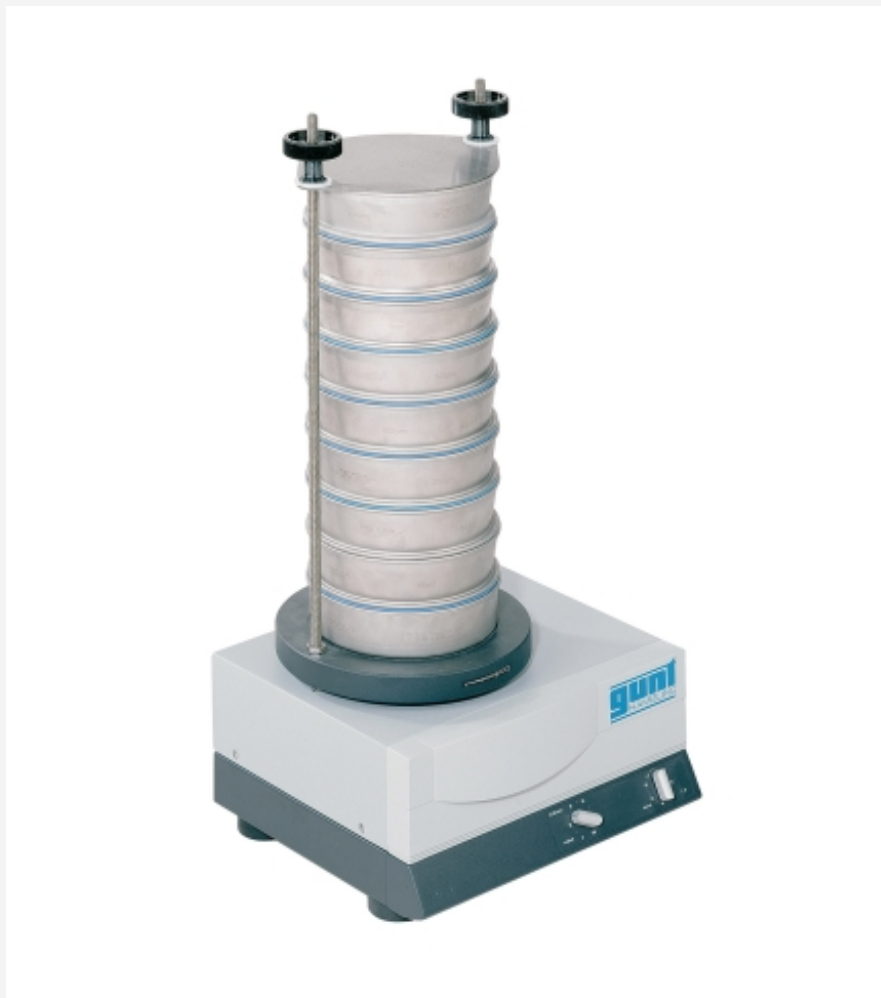


CE 264

Screening machine



Learning objectives/experiments

- determination of particle size distributions

Specification

- [1] screening machine for particle size analysis as accessory for CE 245 and CE 275
- [2] screening duration and vibration height adjustable
- [3] 11 screens with different mesh widths
- [4] scales for determining the mass fraction of the separated classes

Technical data

Ø of the screens: 200mm each
Height of the screens: 50mm each

Screening machine

- screening duration: 0...60min
- vibration height: 0...3mm
- mesh width of the screens
 - ▶ 45µm
 - ▶ 63µm
 - ▶ 125µm
 - ▶ 250µm
 - ▶ 500µm
 - ▶ 710µm
 - ▶ 1000µm
 - ▶ 1250µm
 - ▶ 1600µm
 - ▶ 2000µm
 - ▶ 4000µm

Scales

- max. weight: 2200g
- resolution: 10mg

230V, 50Hz, 1 phase
230V, 60Hz, 1 phase
120V, 60Hz, 1 phase
UL/CSA optional
LxWxH: 400x400x800mm (screening machine)
LxWxH: 200x270x100mm (balance)
Weight: approx. 30kg

Description

■ professional analyser for CE 245 and CE 275

The screening machine enables users to separate a mixture of solids into several classes of particle sizes. In the screening process, each particle is compared with a screen mesh in terms of size and shape. Depending on their position, particles with an irregular shape may not be able to pass through the mesh. As the screening machine is vibrating, each particle has the possibility to pass through the meshes several times. First the coarser particles are separated in the upper area. The mesh width decreases towards the bottom.

To be able to adapt the machine to the respective requirements, several screens with various mesh widths are included in the scope of delivery. Scales enable the user to determine the masses of the separated classes in order to determine the particle size distribution.

Scope of delivery

- 1 screening machine
- 1 set of screens
- 1 balance
- 1 manual